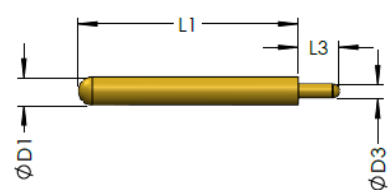


LAUNCH PIN TRANSITIONS TO MICROSTRIP CIRCUITS

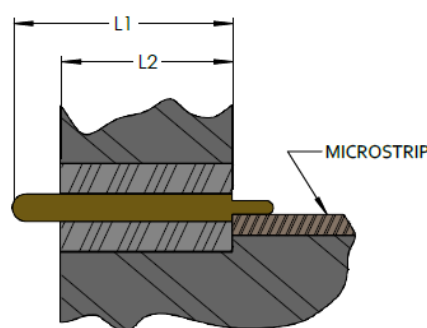
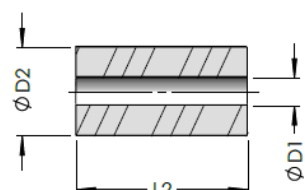
FOR FLANGE MOUNT CONNECTORS

APPLICATION:

PIN:



DIELECTRIC:



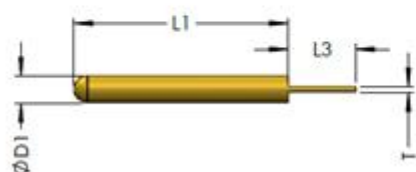
| ACCESSORY PART NO. | | | | | | | | |
|--------------------------------|--------------------------------|-------------------------------|-------|-------|-------|-------|-------|-------|
| PIN & DIELECTRIC | PIN ONLY | DIELECTRIC ONLY | D1 | D2 | D3 | L1 | L2 | L3 |
| 1200-20-10-M1J | 1200-20-23-M1J | 1200-20-24-M1 | 0.020 | 0.064 | 0.010 | 0.160 | 0.125 | 0.050 |
| 1200-20-10-M2J | 1200-20-23-M2J | 1200-20-24-M2 | 0.020 | 0.064 | 0.010 | 0.225 | 0.187 | 0.050 |
| 1200-15-10-M1J | 1200-15-23-M1J | 1200-15-24-M1 | 0.015 | 0.048 | 0.007 | 0.160 | 0.125 | 0.030 |
| 1200-15-10-M2J | 1200-15-23-M2J | 1200-15-24-M2 | 0.015 | 0.048 | 0.007 | 0.225 | 0.187 | 0.030 |
| 1200-12-10-M1J | 1200-12-23-M1J | 1200-12-24-M1 | 0.012 | 0.039 | 0.007 | 0.160 | 0.125 | 0.030 |
| 1200-12-10-M2J | 1200-12-23-M2J | 1200-12-24-M2 | 0.012 | 0.039 | 0.007 | 0.225 | 0.187 | 0.030 |
| 1200-09-10-M1J | 1200-09-23-M1J | 1200-09-24-M1 | 0.009 | 0.029 | 0.005 | 0.160 | 0.125 | 0.015 |
| 1200-09-10-M2J | 1200-09-23-M2J | 1200-09-24-M2 | 0.009 | 0.029 | 0.005 | 0.225 | 0.187 | 0.015 |

LAUNCH PIN/TAB TRANSITIONS TO STRIPLINE CIRCUITS

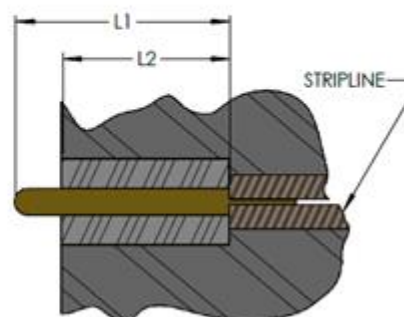
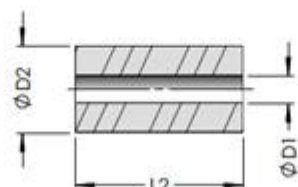
FOR FLANGE MOUNT CONNECTORS

APPLICATION:

PIN/TAB:



DIELECTRIC:



| ACCESSORY PART | | | | | | | | | |
|--------------------------------|--------------------------------|-------------------------------|-------|-------|-------|-------|-------|-------|-------|
| PIN/TAB & DIELECTRIC | PIN/TAB ONLY | DIELECTRIC ONLY | D1 | D2 | D3 | L1 | L2 | L3 | T |
| 1200-20-10-M3J | 1200-20-23-M3J | 1200-20-24-M1 | 0.020 | 0.064 | 0.010 | 0.160 | 0.125 | 0.050 | 0.004 |
| 1200-20-10-M4J | 1200-20-23-M4J | 1200-20-24-M2 | 0.020 | 0.064 | 0.010 | 0.225 | 0.187 | 0.050 | 0.004 |
| 1200-15-10-M3J | 1200-15-23-M3J | 1200-15-24-M1 | 0.015 | 0.048 | 0.007 | 0.160 | 0.125 | 0.030 | 0.004 |
| 1200-15-10-M4J | 1200-15-23-M4J | 1200-15-24-M2 | 0.015 | 0.048 | 0.007 | 0.225 | 0.187 | 0.030 | 0.004 |
| 1200-12-10-M3J | 1200-12-23-M3J | 1200-12-24-M1 | 0.012 | 0.039 | 0.007 | 0.160 | 0.125 | 0.030 | 0.004 |
| 1200-12-10-M4J | 1200-12-23-M4J | 1200-12-24-M2 | 0.012 | 0.039 | 0.007 | 0.225 | 0.187 | 0.030 | 0.004 |
| 1200-09-10-M3J | 1200-09-23-M3J | 1200-09-24-M1 | 0.009 | 0.029 | 0.005 | 0.160 | 0.125 | 0.015 | 0.003 |
| 1200-09-10-M4J | 1200-09-23-M4J | 1200-09-24-M2 | 0.009 | 0.029 | 0.005 | 0.225 | 0.187 | 0.015 | 0.003 |

MATERIALS/CONSTRUCTION:

LAUNCH PIN: BeCu, ASTM-B-196

PLATING: GOLD OVER NICKEL, MIL-G-45204

DIELECTRIC: PTFE, ASTM-D-1710