

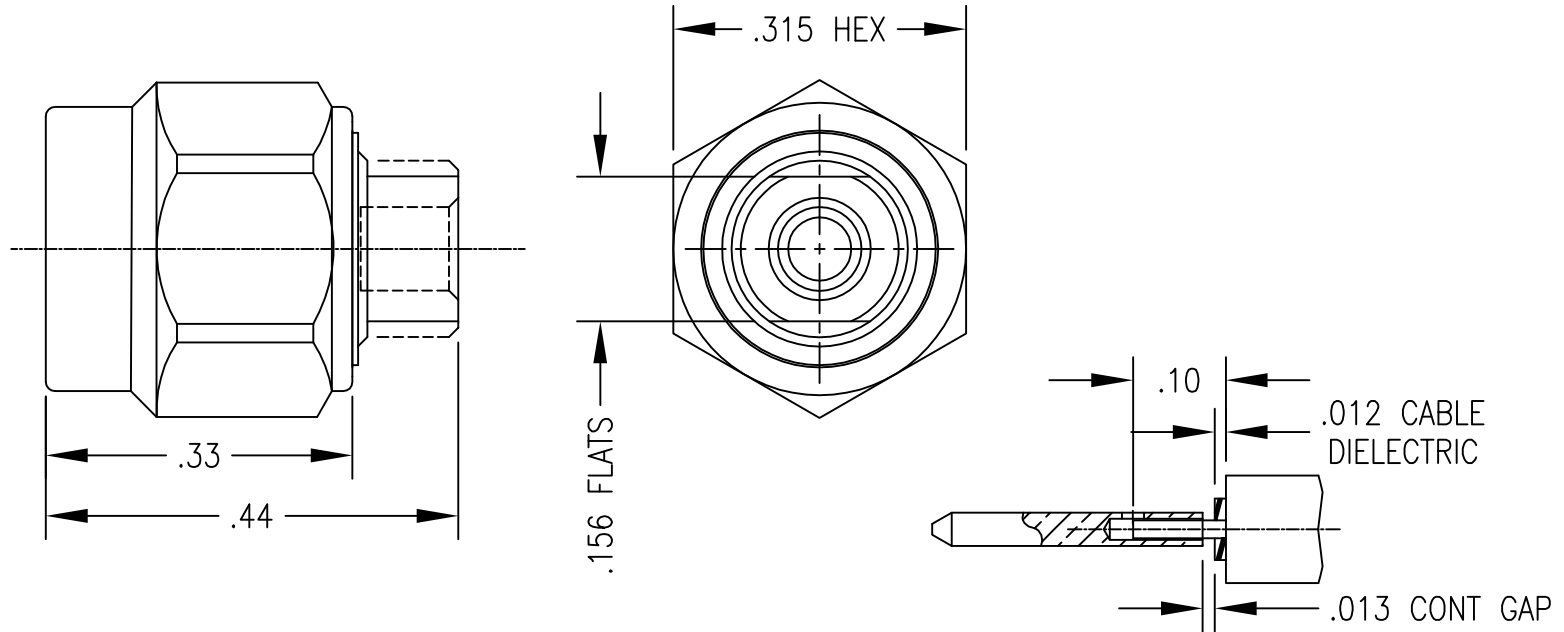
1.0 PERFORMANCE: (sea level)
 1.1 FREQUENCY RANGE DC-40 GHz
 1.2 VSWR < 1.35
 1.3 SYSTEM IMPEDANCE 50 OHMS
 1.4 DWV: 300 Vrms @ 60 Hz
 1.5 VOLTAGE RATING: 90 Vrms
 1.6 TEMP RANGE: -65/+150 °C

2.0 MATERIALS: RoHS
 2.1 CONTACT: BRASS
 2.2 LOCKING RING: BeCu
 2.3 BODY: STD-BRASS, M1-SS303
 2.4 COUPLING NUT: SEE TABLE
 2.5 GASKET: SILICONE RUBBER OR VITON
 3.0 FINISHES: SEE TABLE

4.0 MECHANICAL
 4.1 INTERFACES REF MIL-STD-348
 4.2 COUPLING PROOF TORQUE: 15 INCH*LBS
 4.3 COUPLING NUT RETENTION: 60 LBS AXIAL
 4.4 DURABILITY: STD-100 CYCLES M1-500 CYCLES

DWG NO. OL-2901-03-1			REV. G
PART NUMBER	BODY	CONTACT	COUPLING NUT
2901-03 M1-DJP	GOLD/Ni	GOLD/Ni	SS303: PASSIVATE
2901-03-BWP	ALBALOY/ Ag	GOLD/Cu	SS303: PASSIVATE
2901-03-BWA	ALBALOY/ Ag	GOLD/Cu	BRASS: ALBALOY
2901-03-VJP	GOLD/Ni	GOLD/Ni	SS303: PASSIVATE

PLATING PER SAN-TRON SPEC. 7.3.1-8



TOOL SET: T-2901-01-SOLDER

G	UPDATE CABLE PREP TO YIELD 40 GHz	MIX	7/20/15	FSH	FSH
F	ADD SS-303 VERSION: 2901-03 M1-DJP	NEW	5/8/15	FSH	FSH
E	ADD PLATING CODE -BWA	NEW	6/13/14	FSH	FSH
D	ADD NOTE 1.2	NEW	6/15/10	FSH	FSH
C	REVIEW & RELEASE FOR PRODUCTION	NEW	5/6/09	FSH	FSH
A	ORIGINAL	NEW	4/17/06		
Rev.	Revisions	Disp.	Date	Dwn.	Appd.
	Ref.: SK-	REMOVE ALL BURRS AND SHARP EDGES .005 MAX.	INTERPRET PER ASME Y14.5M-1994		

THIS DRAWING CONTAINS CONFIDENTIAL INFORMATION PROPRIETARY TO SAN-TRON, INC. IT MUST NOT BE REPRODUCED OR DISCLOSED TO OTHERS OR USED IN ANY OTHER WAY, IN WHOLE OR PART EXCEPT AS AUTHORIZED IN WRITING BY SAN-TRON, INC.

UNLESS OTHERWISE SPECIFIED:
 ALL DIMENSIONS ARE IN INCHES.
 ALL DIMENSIONS ARE AFTER PLATING.
 .XXX = ±.005 ALL MACHINED SURFACES 32/ MAX.
 .XX = ±.01 ANG. ±1/2' FRACTIONAL = ±1/64

Ⓢ .004 MAX. TIR. ⊥ AXIS .001

THIRD ANGLE PROJECTION

DWN	DVP	4/12/06
CHKD	SJS	4/17/06
APPR	FSH	5/6/09

SAN-TRON, INC.
 4 NEWBURYPORT TPK. IPSWICH MA USA 01938
 TEL: 978 - 356 -1585 FAX: 978 - 356 -1573
 WWW.SANTRON.COM E MAIL: santron@santron.com

San-Tron

TITLE: SMA2,92 PLUG, STRAIGHT
 DIRECT SOLDER SR-086

MATERIAL: SEE TABLE

CAGE CODE: 50896 DWG NO. OL-2901-03-1 REV. G

SCALE: X:X