

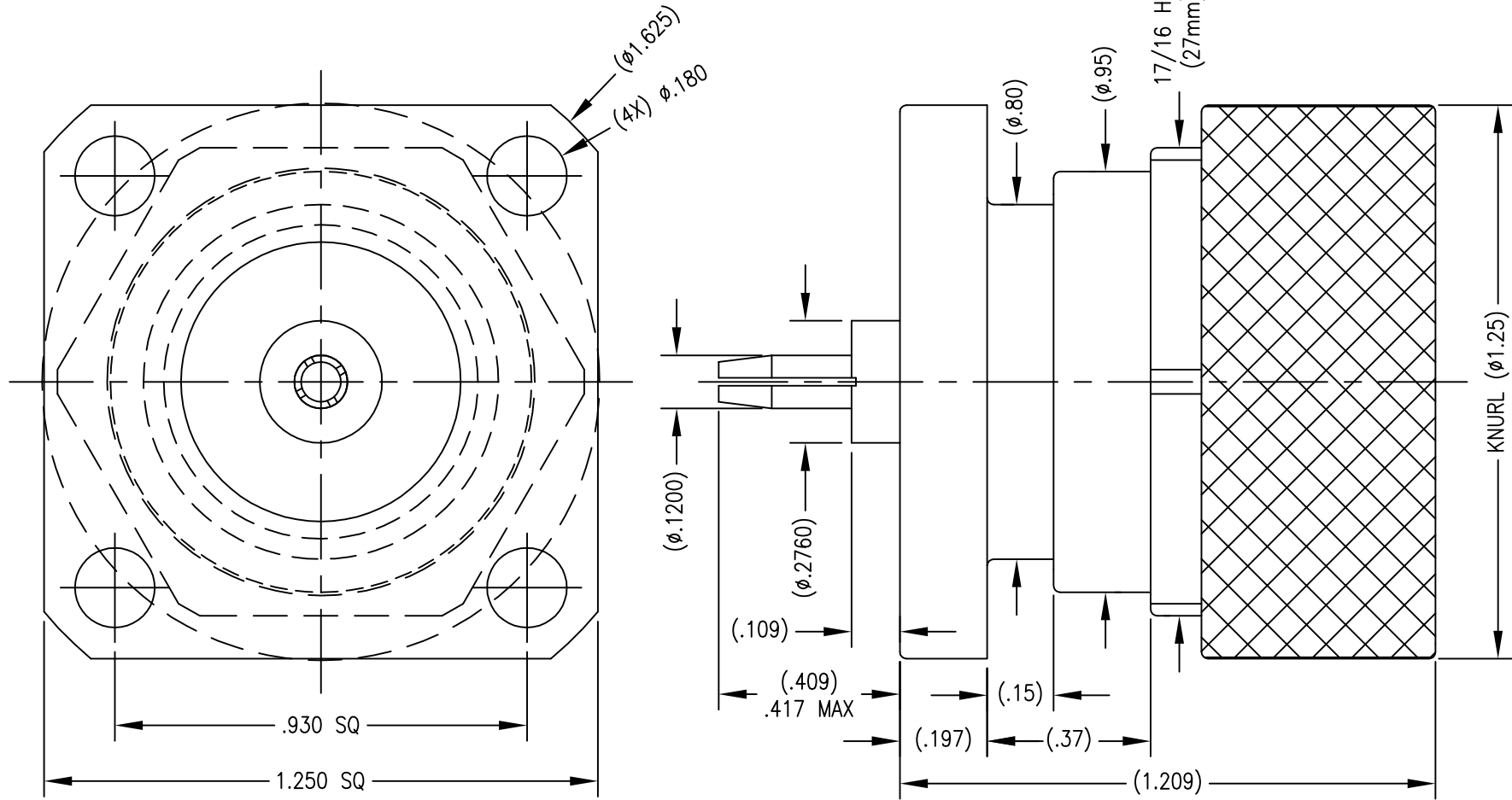
- 1.0 PERFORMANCE  
 1.1 FREQUENCY RANGE: DC - 7.5 GHz  
 1.2 NOMINAL IMPEDANCE: 50 OHMS  
 1.3 DWV: 4000 VRMS @ 60 Hz (SEA LEVEL)  
 1.4 TEMPERATURE RANGE: -55°C TO +155°C

- 2.0 MATERIALS (RoHS COMPLIANT)  
 2.1 CONTACT: BERYLLIUM COPPER  
 2.2 DIELECTRIC: PTFE  
 2.3 GASKET: SILICONE RUBBER  
 2.4 OTHER METAL PARTS: BRASS

- 3.0 FINISHES: SEE TABLE  
 4.0 MECHANICAL  
 4.1 INTERFACE PER IEC 169-4  
 4.2 CONTACT RETENTION:  
 16 LBS AXIAL, 64 IN\*OZ MIN  
 4.3 RETRACTABLE COUPLING NUT

DWG NO. OL-1912-12-1		REV. A
PART NUMBER 1912-12-NS	BODY NICKEL	CONTACT SILVER

PLATING PER SAN-TRON SPEC. 7.3.1-8



THIS DRAWING CONTAINS CONFIDENTIAL INFORMATION PROPRIETARY TO SAN-TRON, INC. IT MUST NOT BE REPRODUCED OR DISCLOSED TO OTHERS OR USED IN ANY OTHER WAY, IN WHOLE OR PART EXCEPT AS AUTHORIZED IN WRITING BY SAN-TRON, INC.

UNLESS OTHERWISE SPECIFIED:  
 ALL DIMENSIONS ARE IN INCHES.  
 ALL DIMENSIONS ARE AFTER PLATING.  
 .XXX = ±.005 ALL MACHINED SURFACES 64/ MAX.  
 .XX = ±.01 ANG. ±1/2' FRACTIONAL = ±1/64

Ⓢ.004 MAX. TIR. ⊥ AXIS .001



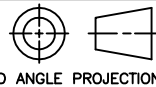
SAN-TRON, INC.

4 NEWBURYPORT TPK. IPSWICH MA USA 01938  
 TEL: 978 - 356 -1585 FAX: 978 - 356 -1573  
 WWW.SANTRON.COM E MAIL: santron@santron.com

TITLE 7/16 PANEL RECEPTACLE, QC PLUG  
 RETRACTABLE COUPLING NUT

MATERIAL: FINISH: SEE TABLE

CAGE CODE: 50896 DWG NO. OL-1912-12-1 REV. A  
 SCALE X:X



DWN	FSH	4/29/15
CHKD	JS	5/4/15
APPR	FSH	5/4/15

Rev.	Revisions	Disp.	Date	Dwn.	Appd.
A	RELEASE	NEW	5/4/15	FSH	FSH
3	PRELIMINARY	NEW	5/4/15		
Ref.: BRM24167		REMOVE ALL BURRS AND SHARP EDGES .005 MAX.		INTERPRET PER ASME Y14.5M-1994	

DO NOT SCALE DRAWING