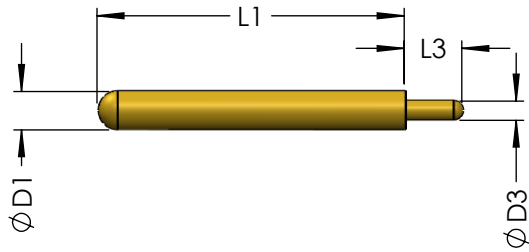


### LAUNCH PIN TRANSITIONS TO MICROSTRIP CIRCUITS

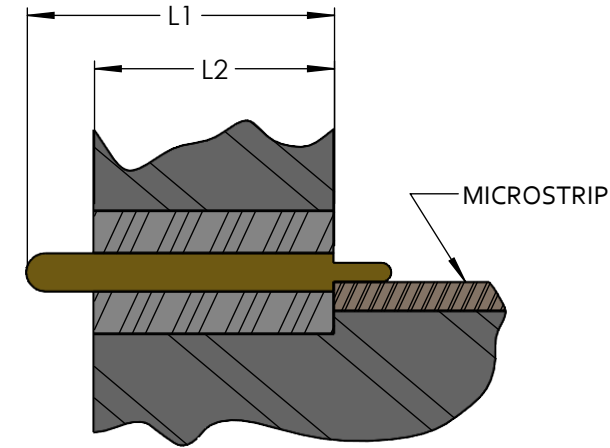
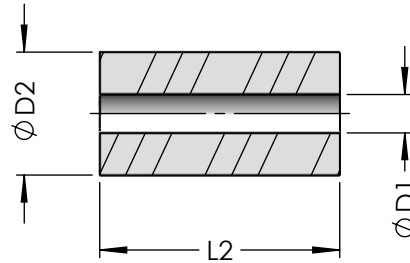
FOR FLANGE MOUNT CONNECTORS

### APPLICATION:

#### PIN:



#### DIELECTRIC:



#### MATERIALS/CONSTRUCTION:

LAUNCH PIN: BeCu, ASTM-B-196

PLATING: GOLD OVER NICKEL, MIL-G-45204

DIELECTRIC: PTFE, ASTM-D-1710

ACCESSORY PART NO.			D <sub>1</sub>	D <sub>2</sub>	D <sub>3</sub>	L <sub>1</sub>	L <sub>2</sub>	L <sub>3</sub>
PIN & DIELECTRIC	PIN ONLY	DIELECTRIC ONLY						
1200-20-10-M1	1200-20-23-M1J	1200-20-24-M1	.020	.064	.010	.160	.125	.050
1200-20-10-M2	1200-20-23-M2J	1200-20-24-M2	.020	.064	.010	.225	.187	.050
1200-15-10-M1	1200-15-23-M1J	1200-15-24-M1	.015	.048	.007	.160	.125	.030
1200-15-10-M2	1200-15-23-M2J	1200-15-24-M2	.015	.048	.007	.225	.187	.030
1200-12-10-M1	1200-12-23-M1J	1200-12-24-M1	.012	.039	.007	.160	.125	.030
1200-12-10-M2	1200-12-23-M2J	1200-12-24-M2	.012	.039	.007	.225	.187	.030
1200-09-10-M1	1200-09-23-M1J	1200-09-24-M1	.009	.029	.005	.160	.125	.015
1200-09-10-M2	1200-09-23-M2J	1200-09-24-M2	.009	.029	.005	.225	.187	.015