

- 1.0 PERFORMANCE: (sea level)
- 1.1 FREQUENCY RANGE DC-20 GHz
- 1.2 VSWR: 1.22 MAX (-20 dB)
- 1.18 TYPICAL (-21.7dB)
- 1.3 SYSTEM IMPEDANCE 50 OHMS
- 1.4 DWV: 500 Vrms @ 60 Hz
- 1.5 VOLTAGE RATING: 175 VRMS
- 1.6 TEMP RANGE: -65 / +165 °C

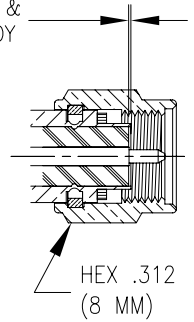
- 2.0 MATERIALS
- 2.1 CONTACT: BeCu
- 2.2 LOCKING RING: BeCu
- 2.3 COUPLING NUT: STAINLESS STEEL
- 2.4 CRIMP FERRULE: SOFT COPPER
- 2.5 BODY: BRASS
- 2.6 INSULATOR: PTFE
- 2.7 GASKET: Si RUBBER
- 3.0 FINISHES: SEE TABLE

- 4.0 MECHANICAL
- 4.1 INTERFACES PER MIL-STD-348
- 4.2 COUPLING PROOF TORQUE 15 INCH\*LB
- 4.3 COUPLING NUT RETENTION 60 LBS AXIAL
- 4.4 CONTACT RETENTION 6 LBS AXIAL
- 4.5 DURABILITY: 100 CYCLES

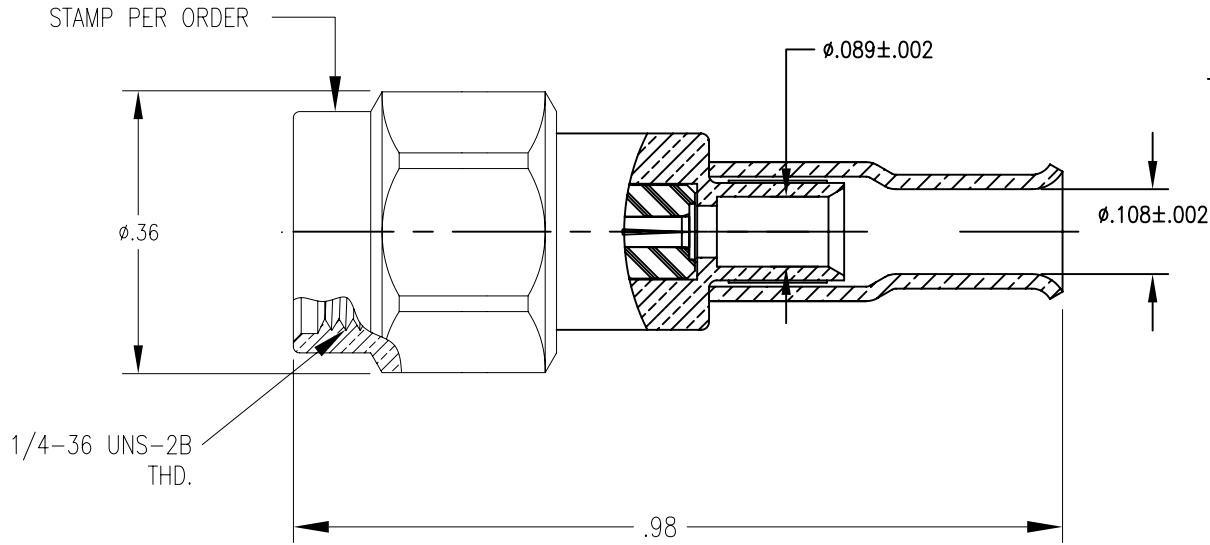
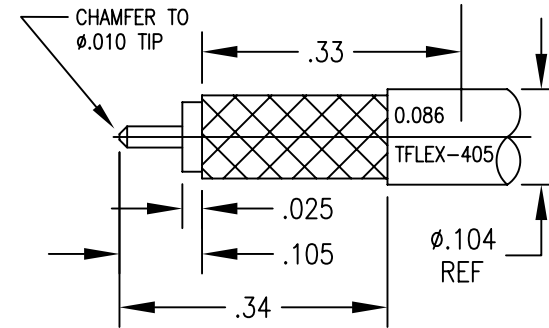
DWG NO. OL-1201-27-1			REV. E
PART NUMBER	BODY	CONTACT	CPL. NUT
1201-27-GJP	GOLD	GOLD/Ni	PASSIVATE

PLATING PER SAN-TRON SPEC. 7.3.1-8

.010 CONTACT:BODY &  
.000 INSULATOR:BODY



CRIMP HEX SIZE: .151



DO NOT SCALE DRAWING

Rev.	Revisions	Disp.	Date	Dwn.	Appd.
E	UPDATE PROCEDURES	MIX	7/19/07	FSH	FSH
D	UPDATE CONNECTOR ELECTRICAL PERFORMANCE PER ACTUAL TEST RESULTS	MIX	6/21/07	DVP	FSH
C	IMPLEMENT IMPROVED CABLE PREP	MIX	4/12/07	FSH	FSH
B	OMIT .030 EXPOSED CORE ON CABLE BACKEND.	MIX	5/11/06	DVP	FSH
A	ORIGINAL	NEW	1/3/05		
RECOM.	STOCK SIZE	FT/M PCS	Ref.:	REMOVE ALL BURRS AND SHARP EDGES .005 MAX.	INTERPRET PER ASME Y14.5M-1994
			SK		

THIS DRAWING CONTAINS CONFIDENTIAL INFORMATION PROPRIETARY TO SAN-TRON INC. IT MUST NOT BE REPRODUCED OR DISCLOSED TO OTHERS OR USED IN ANY OTHER WAY, IN WHOLE OR PART EXCEPT AS AUTHORIZED IN WRITING BY SAN-TRON INCORPORATED.

UNLESS OTHERWISE SPECIFIED:  
ALL DIMENSIONS ARE IN INCHES.  
ALL DIMENSIONS ARE AFTER PLATING.  
.XXX= ±.005 ALL MACHINED SURFACES  $\sqrt{63}$  MAX.  
.XX= ±.01 ANG.±1/2° FRACTIONAL= ±1/64  
[◎].004 MAX. TIR. [⊥] AXIS .001

THIRD ANGLE PROJECTION

DWN	LAP	1/3/05
CHKD	SJS	X
APPR	FSH	1/3/05

**SAN-TRON, INC.**  
4 NEWBURYPORT TPK. IPSWICH MA USA 01938  
TEL: 978 - 356 -1585 FAX: 978 - 356 -1573  
WWW.santron.com E MAIL: santron@santron.com

TITLE eSMA PLUG, STRAIGHT, EZ STYLE, TFLEX-405, SS-405 (0.086)

MATERIAL: SEE NOTE 2.0 FINISH: SEE NOTE 3.0

CAGE CODE: 50896 DWG NO. OL-1201-27-1 REV. E

SCALE 4:1